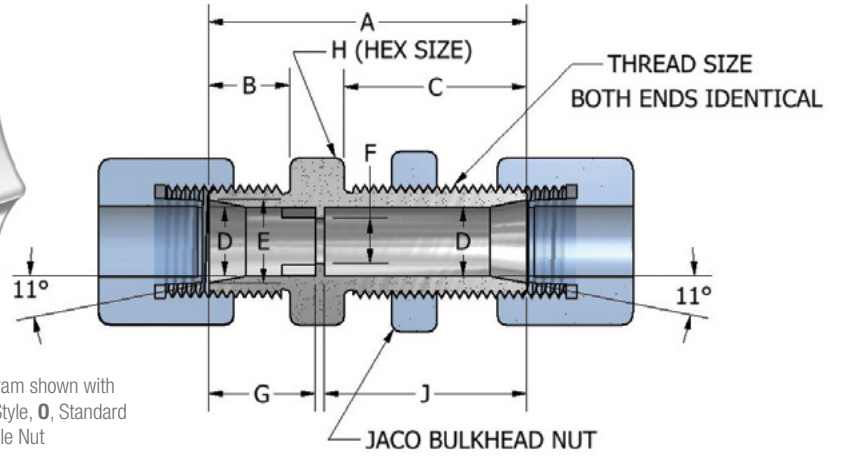
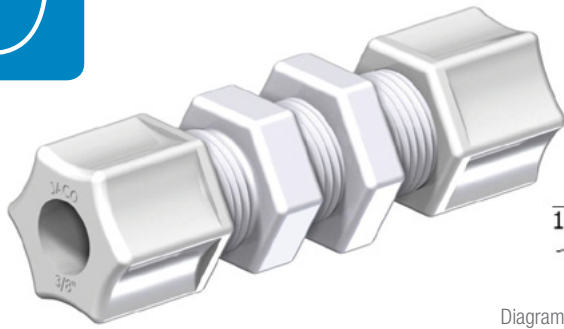


# BULKHEAD UNIONS

# 20

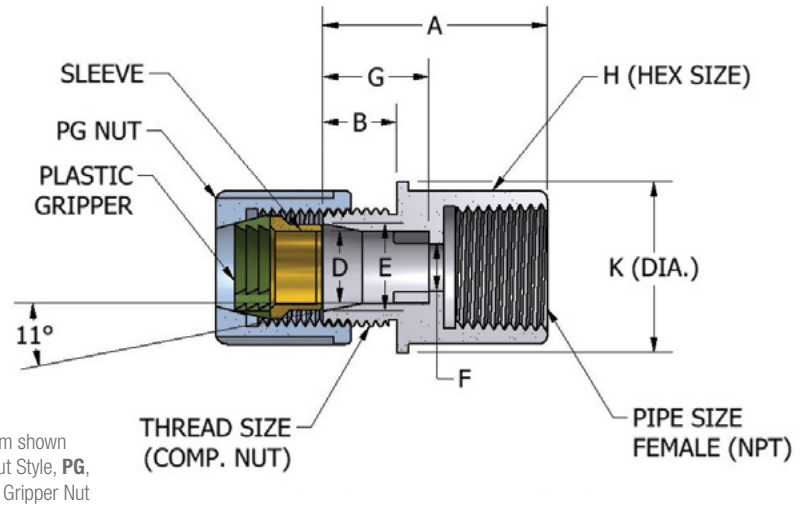
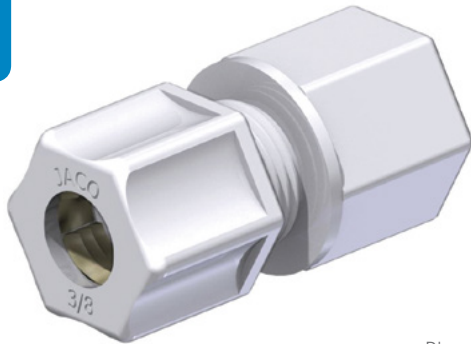


## Bulkhead Union

JACO Part No.	Tube O.D.	Comp. Thd.	A	B	C	D	E	F	G	H	J	Bulkhead Thru Hole Clearance Recommendation
Conf.	Tube	Mtl.	Nut									
20 - 4 - 4 - P - O	1/4	7/16-20	±1/64	±1/64	±1/64	+0.005 +0.010						
20 - 5 - 4 - P - SG	5/16	1/2-20	1-31/64	23/64	7/8	.250	.330-.335	.170	15/32	5/8	31/32	15/32
20 - 6 - 4 - P - SG	3/8	5/8-20	1-5/8	23/64	63/64	.312	.380-.385	.232	31/64	11/16	1-3/32	17/32
20 - 8 - 4 - P - NUT	1/2	3/4-20	1-49/64	29/64	1-1/64	.375	.460-.465	.250	19/32	13/16	1-1/8	21/32
20 - 12 - 4 - P - NUT	3/4	1-1/6-20	1-7/8	35/64	1-3/64	.500	.590-.595	.375	11/16	15/16	1-9/64	25/32
20 - 12 - 4 - P - NUT	3/4	1-1/6-20	2-13/64	43/64	1-11/32	.750	.860-.865	.625	13/16	1-5/16	1-15/32	1-3/32

# FEMALE CONNECTORS

# 25



## Female Connector

JACO Part No.	Tube O.D.	Pipe Thd. FNPT	Comp. Thd.	A	B	D	E	F	G	H	K
Conf.	Tube	Pipe	Mtl.	Nut							
25 - 4 - 2 - P - O	1/4	1/8	7/16-20	±1/64	±1/64	+0.005 +0.010					
25 - 4 - 4 - P - O	1/4	1/4	7/16-20	1-3/32	3/8	.250	.330-.335	.170	15/32	43/64	25/64
25 - 5 - 4 - P - SG	5/16	1/4	1/2-20	1-7/32	15/32	.312	.380-.385	.232	31/64	3/4	13/16
25 - 6 - 4 - P - SG	3/8	1/4	5/8-20	1-13/64	29/64	.375	.460-.465	.250	9/16	3/4	13/16
25 - 6 - 6 - P - NUT	3/8	3/8	5/8-20	1-7/32	15/32	.375	.460-.465	.250	19/32	15/16	N/A
25 - 6 - 8 - P - NUT	3/8	1/2	5/8-20	1-17/64	15/32	.375	.460-.465	.250	19/32	1-1/16	N/A
25 - 8 - 6 - P - NUT	1/2	3/8	3/4-20	1-9/32	39/64	.500	.590-.595	.375	11/16	15/16	N/A
25 - 8 - 8 - P - NUT	1/2	1/2	3/4-20	1-9/32	9/16	.500	.590-.595	.375	11/16	1-1/16	N/A
25 - 10 - 8 - P - NUT	5/8	1/2	7/8-20	1-1/2	11/16	.625	.715-.720	.500	45/64	1-1/16	N/A