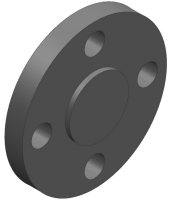
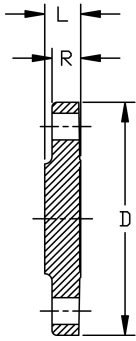


## Flange (Blind) Schedule 80 Harvel® PVC



- ANSI 150 Class according to ANSI B16.5
- 1/2" - 8" 150 psi @ 73°F (10.3 bar @ 22.7°C)
- 10" - 24" 50 psi @ 73°F (3.5 bar @ 22.7°C)
- HC = Honeycomb (Face)



Size (inch)	P/L	Part No.	Pack Qty	# holes	Bolt Dia. (inch)	bolt cir. dia. (inch)	D (inch)	L (inch)	R (inch)	Design
1/2	608	<b>853-005</b>	5	4	1/2	2.38	3.51	0.48	0.39	HC
3/4	608	<b>853-007</b>	5	4	1/2	2.75	3.90	0.55	0.45	HC
1	608	<b>853-010</b>	5	4	1/2	3.13	4.29	0.66	0.53	HC
1 1/4	608	<b>853-012</b>	5	4	1/2	3.50	4.62	0.73	0.59	HC
1 1/2	608	<b>853-015</b>	5	4	1/2	3.88	5.01	0.81	0.68	HC
2	608	<b>853-020</b>	5	4	5/8	4.75	6.02	0.90	0.70	HC
2 1/2	608	<b>853-025</b>	5	4	5/8	5.50	7.00	0.97	0.76	HC
3	608	<b>853-030</b>	5	4	5/8	6.00	7.45	1.03	1.03	HC
4	608	<b>853-040</b>	5	8	5/8	7.50	8.96	1.14	1.14	HC
6	608	<b>853-060</b>	2	8	3/4	9.50	10.95	1.51	1.27	HC
8	608	<b>853-080</b>	2	8	3/4	11.75	13.51	1.62	1.45	HC
10	A33	<b>853-100N</b>	1	12	7/8	14.25	16.00	1.00	1.00	SOLID
12	A33	<b>853-120N</b>	1	12	7/8	17.00	19.00	1.00	1.00	SOLID
14	A33	<b>853-140N</b>	1	12	1	18.75	21.00	1.00	1.00	SOLID
16	A33	<b>853-160N</b>	1	16	1	21.25	23.50	1.00	1.00	SOLID
18	A33	<b>853-180N</b>	1	16	1 1/8	22.75	25.00	1.00	1.00	SOLID
20	A33	<b>853-200N</b>	1	20	1 1/8	25.00	27.50	1.00	1.00	SOLID
24	A33	<b>853-240N</b>	1	20	1 1/4	29.50	32.00	1.00	1.00	SOLID

The technical data are not binding. They neither constitute expressly warranted characteristics nor guaranteed properties nor a guaranteed durability. They are subject to modification. Our General Terms of Sale apply.

Georg Fischer Piping Systems Ltd, Postfach, CH-8201 Schaffhausen/Switzerland

Phone +41 -(0)52-631 1111

e-mail: [info.ps@georgfischer.com](mailto:info.ps@georgfischer.com)

Internet: <http://www.gfps.com>