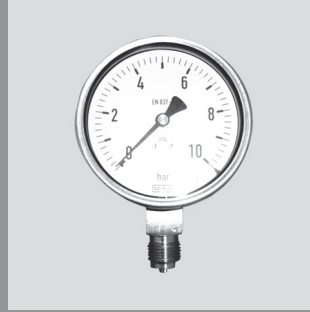


Pressure gauge standard version



Measuring Range

- 0 - 2,5 bar
- 0 - 4 bar
- 0 - 6 bar
- 0 - 10 bar

Measuring Accuracy

- class of accuracy $\lt \varnothing 100$; 1,6
- class of accuracy $\gt = \varnothing 100 = 1,0$

Pressure Gauge Version

- housing: POM
- measuring system: copper alloy

Pressure Gauge Connection

- G1/4"
- G1/2"
- rear connection G1/4"

Attention

- Optional MDM 902 with pressure gauge!

Pressure measurement, Pressure gauge standard version



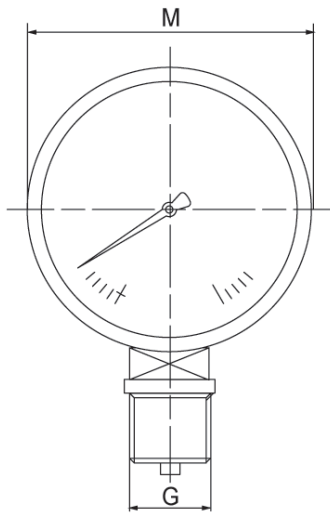
body POM

<i>size</i> <i>pressure range</i>	pressure range(bar)	0-2.5	0-2.5	0-2.5	0-4	0-4	0-4	0-6
	M(mm)	63	80	100	63	80	100	63
<i>Connection</i>	<i>sealing</i>	<i>ident No.</i>						
brass threaded neck G	-	42458	42463	42514	42459	42510	42515	42460
	<i>weight</i>	0.13 kg	0.18 kg	0.21 kg	0.13 kg	0.18 kg	0.21 kg	0.13 kg

body POM

<i>size</i> <i>pressure range</i>	pressure range(bar)	0-6	0-6	0-6	0-10	0-10	0-10	0-10
	M(mm)	80	100	160	63	80	100	160
<i>Connection</i>	<i>sealing</i>	<i>ident No.</i>						
brass threaded neck G	-	42511	42516	42519	42461	42512	42517	42520
	<i>weight</i>	0.18 kg	0.21 kg	0.85 kg	0.13 kg	0.18 kg	0.21 kg	0.85 kg

Pressure measurement, Pressure gauge standard version



dimensions

M(mm)	63	80	100	160
G(inch)	1/4	1/2	1/2	1/2
dimensions(mm)				
G	1/4	1/2	1/2	1/2

Distributed by



New South Wales and
 Australian Capital Territory
 +61 2 4350 8200

Victoria
 +61 3 9325 3900

Northern Territory and
 South Australia
 +61 8 8374 7800

Western Australia
 +61 8 9412 6100

Queensland
 +61 7 3802 9500

products@trility.com.au

Tasmania
 +61 3 6391 7300