

Chlorine gas vacuum regulators are designed to regulate gas supply to chlorinators



Vacuum regulator designed for performance and reliability, with capacities up to 10kg per hour.



Every vacuum regulator is carefully tested and inspected before shipment, to ensure it meets our highest standards.

This range of vacuum regulators is designed for performance and reliability, providing an excellent cost-effective solution.

Key components

- Handles chlorine gas, ammonia, sulfur dioxide and carbon dioxide
- Non-isolating switchover
- Positive indication of chlorinator status
- Positive shut-off
- Captive yoke, tonne container and manifold mounting
- Built-in pressure relief vent

Benefits

- Positive indication of operating status
- Positive shut-off - allows containers to be changed without admitting air, dirt, or moisture
- Captive universal yoke mounting allows easy alignment of the unit on the container
- Local or remote vent valve
- Fewer internal parts provide reliable, dependable service
- Robust, lightweight design
- Proven reliability and performance

Spare parts

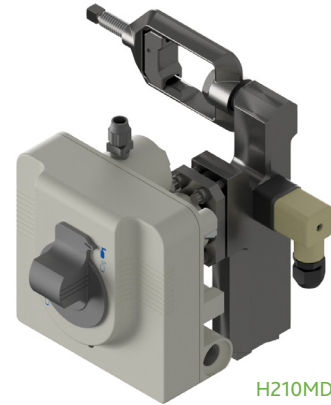
- Spare parts readily available from TRILITY
- Service kits
- Gas cartridge
- Nipple
- Drip leg
- Front cover, back housing, front housing
- Diaphragm backing assembly

Servicing

- Servicing of regulators, gas cartridges and drip legs readily available from TRILITY
- Manufacturer recommendation is for a minimum annual service

Compliance

- Designed to conform to all applicable NEC and NEMA specifications and Chlorine Institute and Compressed Gas Association recommendations



H210MDL

Selection criteria

Vacuum regulator options to suit every application:

| Part number | Description |
|-------------|--|
| H210MDHPI | Chlorine manual vacuum regulator c/w 10kg/hr seat and dripleg/heater assy and pressure indicator |
| H210MDL | Chlorine manual vacuum regulator c/w 10kg/hr seat and dripleg/heater assy |
| AAB4337A | Chlorine 4kg/hr manual switchover vacuum regulator (210M) c/w tube fitting |
| AAB4337B | Chlorine 10kg/hr manual switchover vacuum regulator (210M) c/w tube fitting |
| AAB4865A | Chlorine 4kg/hr auto switchover vacuum regulator (210S) c/w tube fitting |
| AAB4865B | Chlorine 10kg/hr auto switchover vacuum regulator (210S) c/w 10kg/hr seat and tube fitting |
| H210SSDLH | Chlorine auto switchover vacuum regulator c/w 10kg/hr seat and dripleg/heater assy |
| AAA3704H-WA | Chlorine auto switchover vacuum regulator c/w 10kg/hr seat and dripleg/heater assy and vacuum alarm - proximity/ position switch |

* This equipment should be installed, operated, and serviced by trained, qualified personnel only



www.trility.com.au



For further information

New South Wales and
Australian Capital Territory
+61 2 4350 8200

Victoria
+61 3 9325 3900

Northern Territory and
South Australia
+61 8 8374 7800

Western Australia
+61 8 9412 6100

Queensland
+61 7 3802 9500

sales@trility.com.au

Tasmania
+61 3 6391 7300